



**GIFTSETS**  
MINI VERSION



**CATALYST**

PS12

## TWO LAYERS PREMIUM SET



### SMART ORGANIZER 5000 MAH

organizer with wireless charging abilities: 5000 mAh capacity and lighted led. places for a mobile holder and mobile stand and card pockets and dual USB ports.

### METAL PEN SET



### GLASS FLASH MEMORY 16 GB



### GENUINE WALLET

Mini-sized power bank designed with a led screen  
battery capacity : 10000 mAh Type c in/output :  
PD 20W(Max)9v 2.25A 5/2A.



### GLASS CABLE



### GLASS WIRELESS POWER BANK

wireless power bank 5000 mah battery  
with HE glass led screen output: 5W.  
micro and type c USB input : 5V/2.0A  
(MAX)





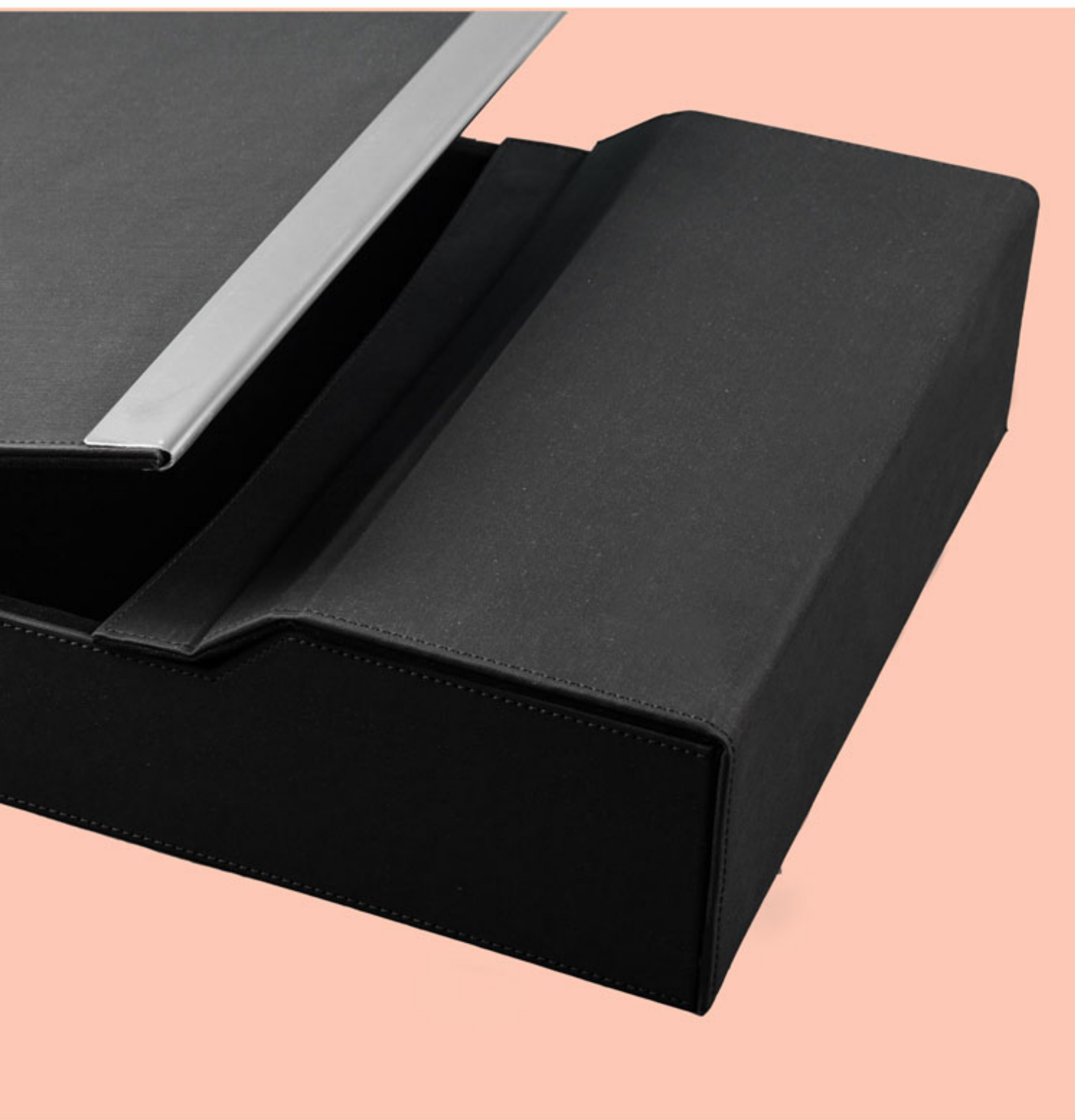
## PREMIUM LEATHER BOX WITH METAL PALLET

**BL9**

### PRINTING STYLE

your logo can be engraved or printed

Large Premium leather box With totally special design to suit for more items. it is the best solution for your campaign to reflect how successful it will be



### DIMENSIONS

37 cm / 28cm / 5 cm



### MAGNETIC LOCK

PS4



PREMIUM WOODEN SET



SMART LEATHER ORGANIZER  
FLASH MEMORY 16GB

METAL PEN

THERMAL MUG



Eco-Friendly Wooden PRODUCTS

WIRELESS SPEAKER

pure nature speaker .with bluteooh version : v5.0 ,  
battery : 500mAH lithium-polymer , and  
connection range reaches to 10 m



CARGING PORT  
TYPE C  
AUX PORT

BAMBO CABLE



BAMBO WIRELESS POWER BANK

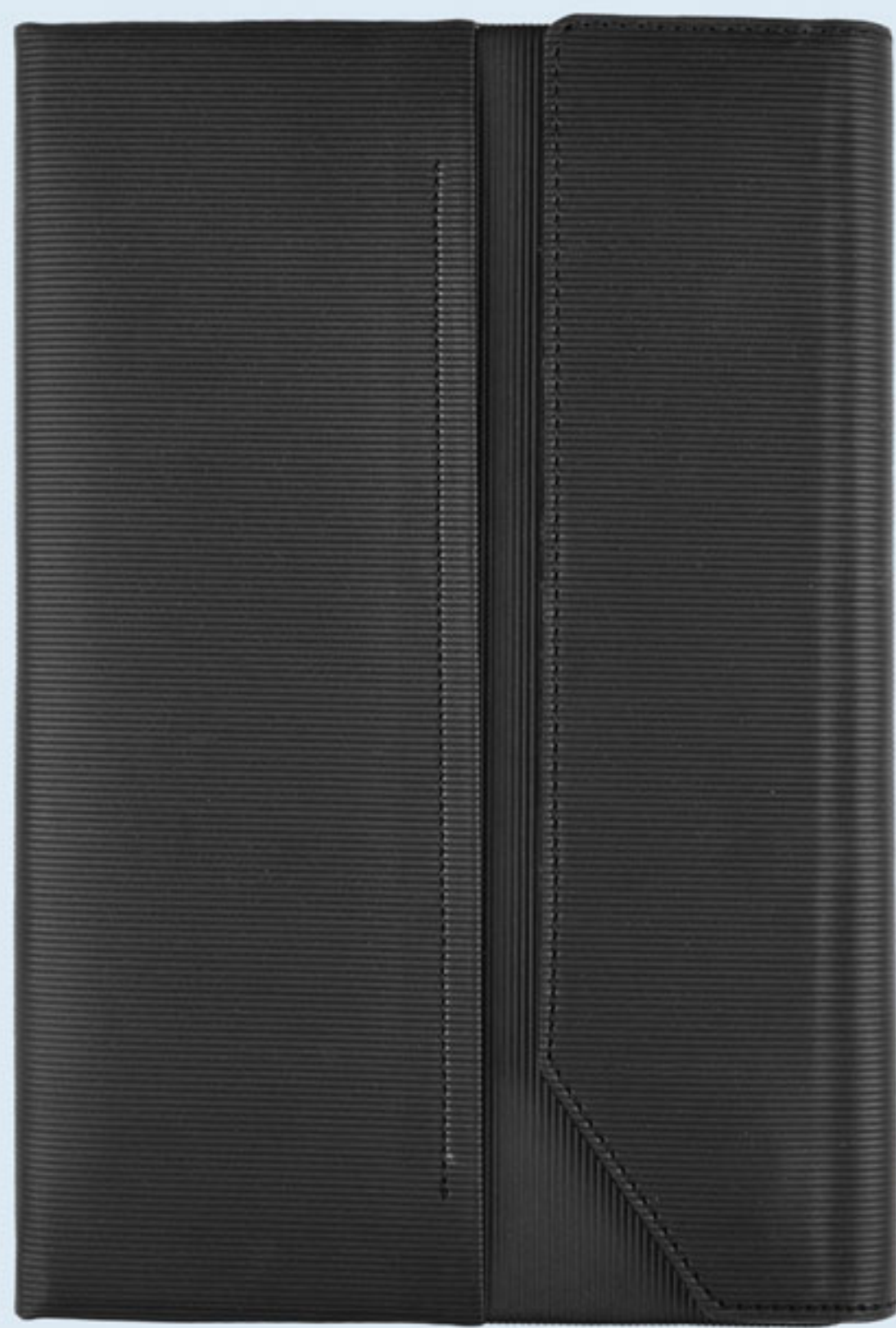


wireless power bank 10000 mAH battery with digital screen  
output : 5W. micro and type c usb inbut : 5V/2.0A (MAX)



VIP CEMENT PACKAGE

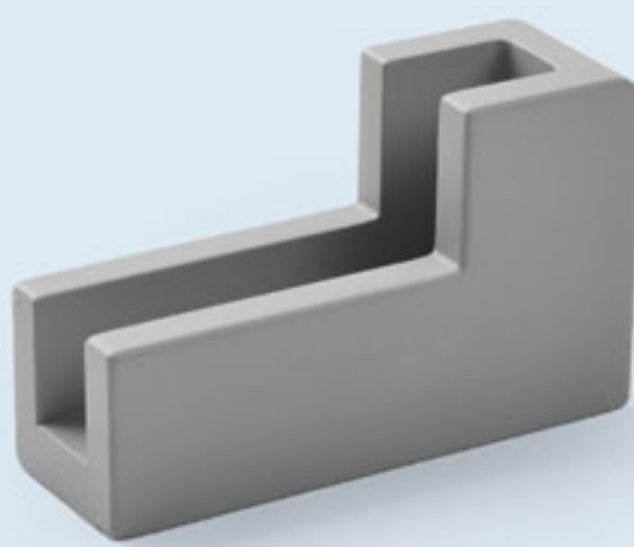
PS5



RUBBER NOTEBOOK



METAL SET PEN



DESK CARD HOLDER

THERMAL MUG



WIRELESS CHARGER

wireless charger and desk organizer includes wireless charging functionality wireless output : 5w with cards and your mobile.



WIRELESS SPEAKER

with bluetooth version : v5.0 , battery : 500mAH lithium-polymer , and connection range reaches to 10 m



USB CHARGING PORT  
ON / OFF



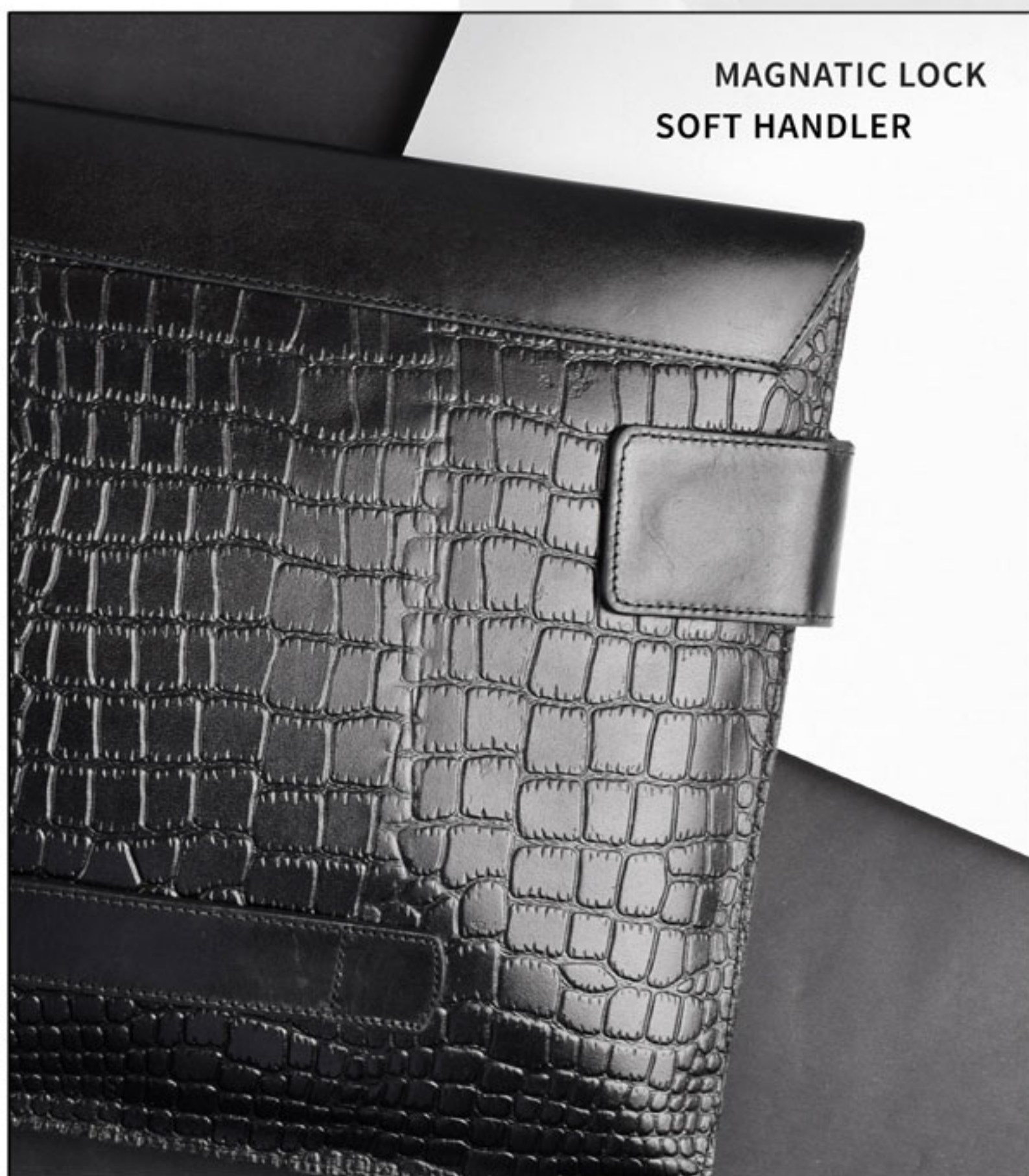


Genuine leather organizer  
 Genuine leather card holder  
 Wireless power bank (5000mAh)  
 Wireless mouse - Leather pen  
 Flash memory (16GB)

**PS6**  
**CROCODILE ELEGANCE**



**LAPTOP SLEEVE** 14.5 INCHES



**MAGNETIC LOCK**  
**SOFT HANDLER**

Premium Genuine leather kit. consist of elegant and usable products that had chosen by experts for extreme value presenting. genuine leather laptop sleeve leather organizer - leather card holder- leather pen- wireless power bank - lighting flash memory- and wireless mouse





PS2

LIGHTING PREMIUM SET



B5 NOTEBOOK



METAL PEN

THERMAL MUG



LOCK

WIRELESS CHARGER

wireless charger with convenient design not only look great on any but it includes wireless charging functionality wireless output: 5w



GLASS WIRELESS POWER BANK

wireless power bank 5000 mah battery with HE glass led screen output: 5W. micro and type c USB input : 5V/2.0A (MAX)



TRAVEL ADAPTER



Dual USB ports





**PREMIUM LEATHER BOX  
LARGE SIZE- NEW DESIGN  
BL8**

**PRINTING STYLE**

your logo can be engraved or printed

Large Premium leather box with mixture of plain and textured leather with outsider certificate holder so you can offer your gift with special gesture to the special clients



**DIMENSIONS**

37 cm / 28cm / 5 cm

**MAGNETIC LOCK**





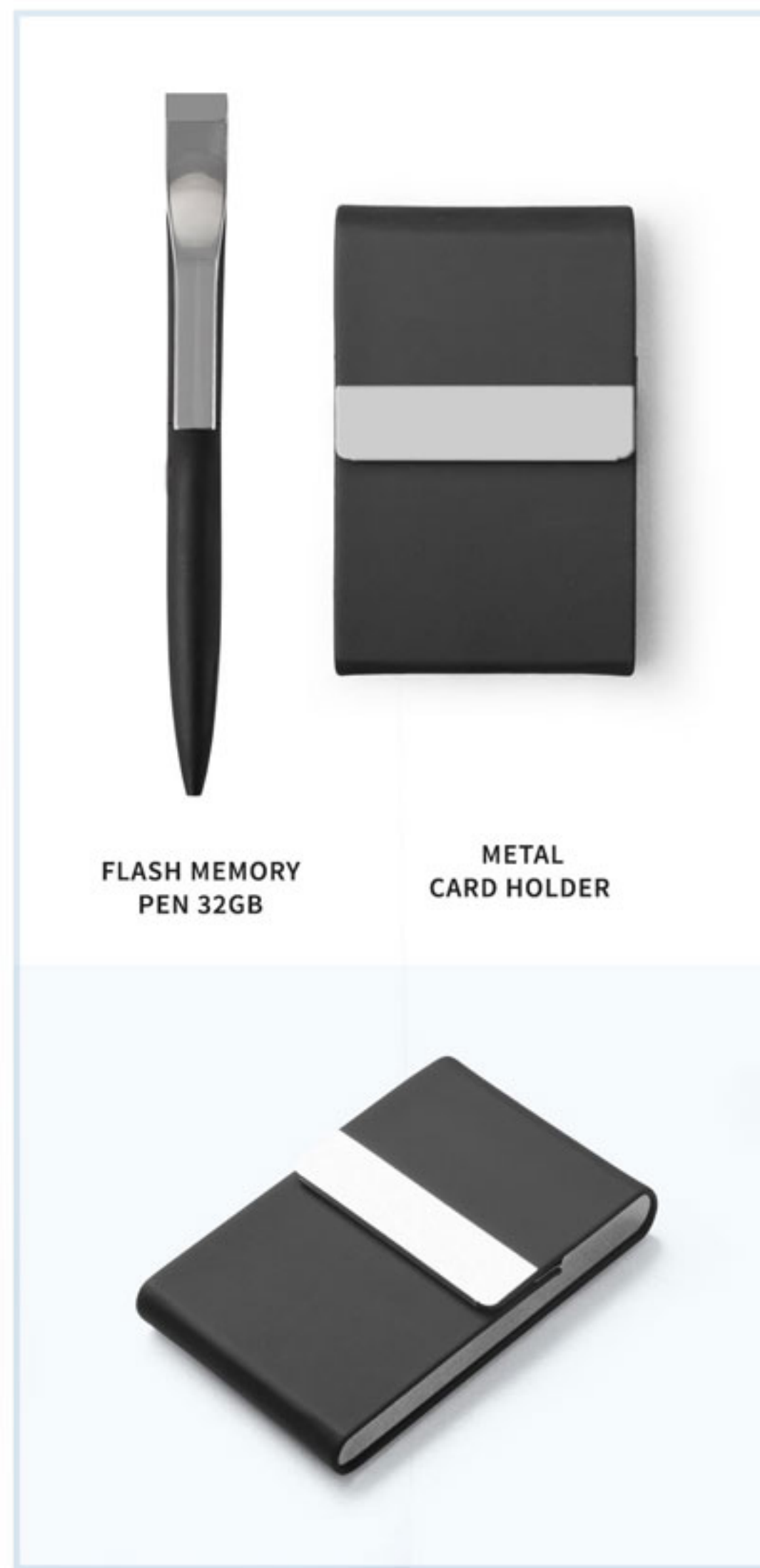
**SILVER LIGHTING SET**

**PS8**



**LEATHER ORGANIZER**

Paper dimensions:A5. Papers: 100 creamy papers. Features: 5 card pockets. pen holder. paper holder and 2 side pockets Printing type : Laser engraving or Silk screen



**FLASH MEMORY PEN 32GB**

**METAL CARD HOLDER**



**DIGITAL WIRELESS POWER BANK**

wireless power bank 10000 mAh battery with digital screen output : 5W. micro and type c usb input : 5V/2.0A (MAX)

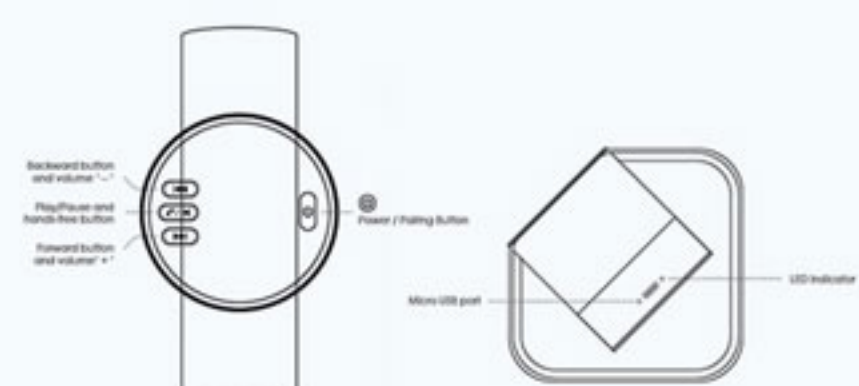


**WIRELESS MOUSE**

with bluetooth version : v5.0 , and connection range reaches to 10 m

**WIRELESS SPEAKER**

with bluetooth version : v5.0 , battery : 500mAh lithium-polymer , and connection range reaches to 10 m





**RUBBER THEME SET**

**PS3**



**SMART ORGANZIER  
5000 MAH**

abilities : 5000 mAh capacity and lighted led . places for mobile holder and mobile stand and card pockets and dual usb ports.



METAL PEN

**THERMAL MUG**



**WIRELESS CHARGER**



**FLASH MEMORY 16GB**



**Premium Leather Box  
Large Size**

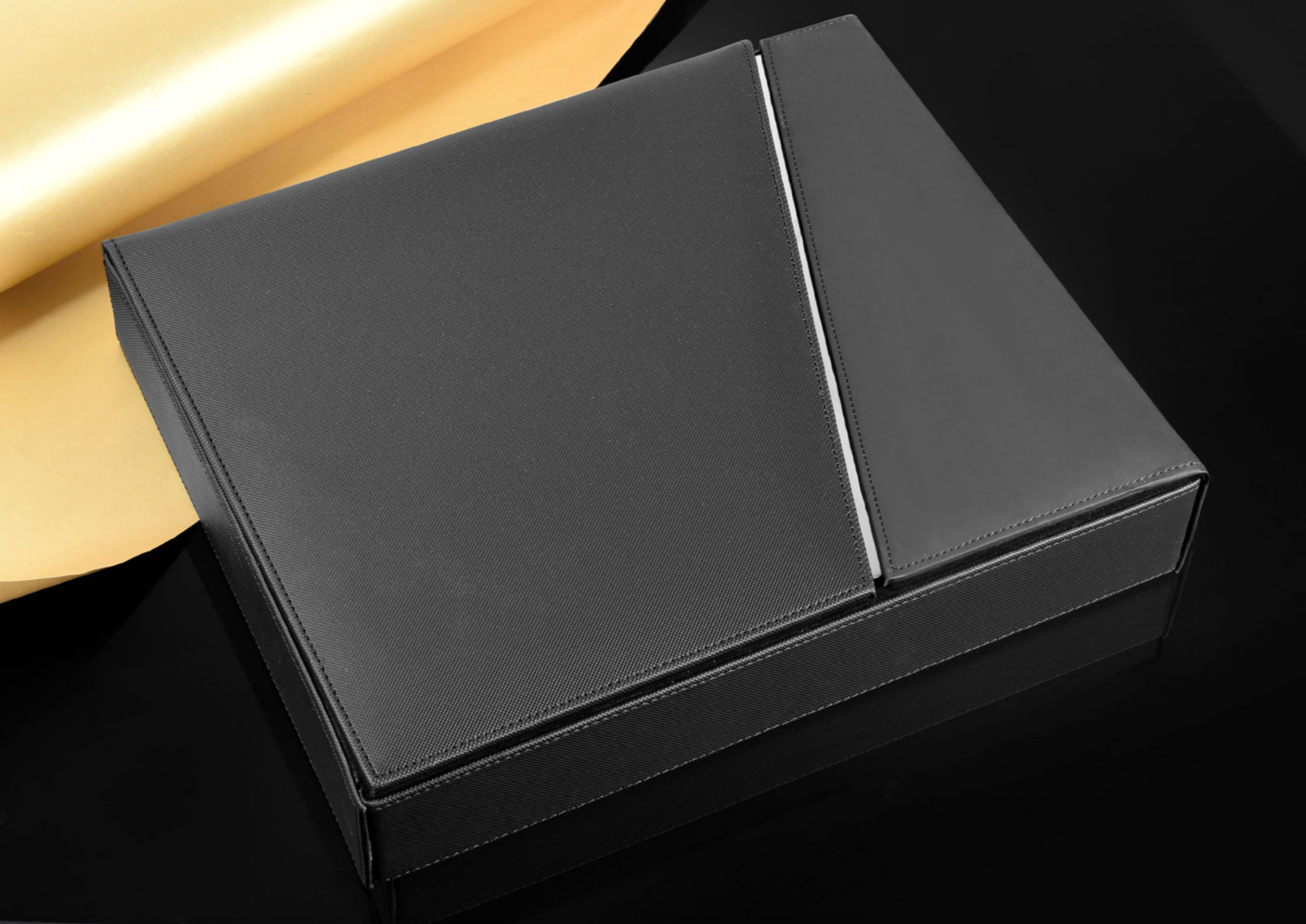


**Dimensions**  
39 cm / 29cm / 7 cm



**WIRELESS CAR CHARGER**





## PREMIUM LEATHER BOX WITH METAL PALLET

**BM3**

### PRINTING STYLE

your logo can be engraved or printed

Medium premium leather box with the special design to suit for more items. It is the best solution for your campaign to reflect how successful it will be.



### DIMENSIONS

37 cm / 28cm / 5 cm

### MAGNETIC LOCK



**WHEAT PREMIUM SET**  
**PS16**

*Wheat Straw* PRODUCTS

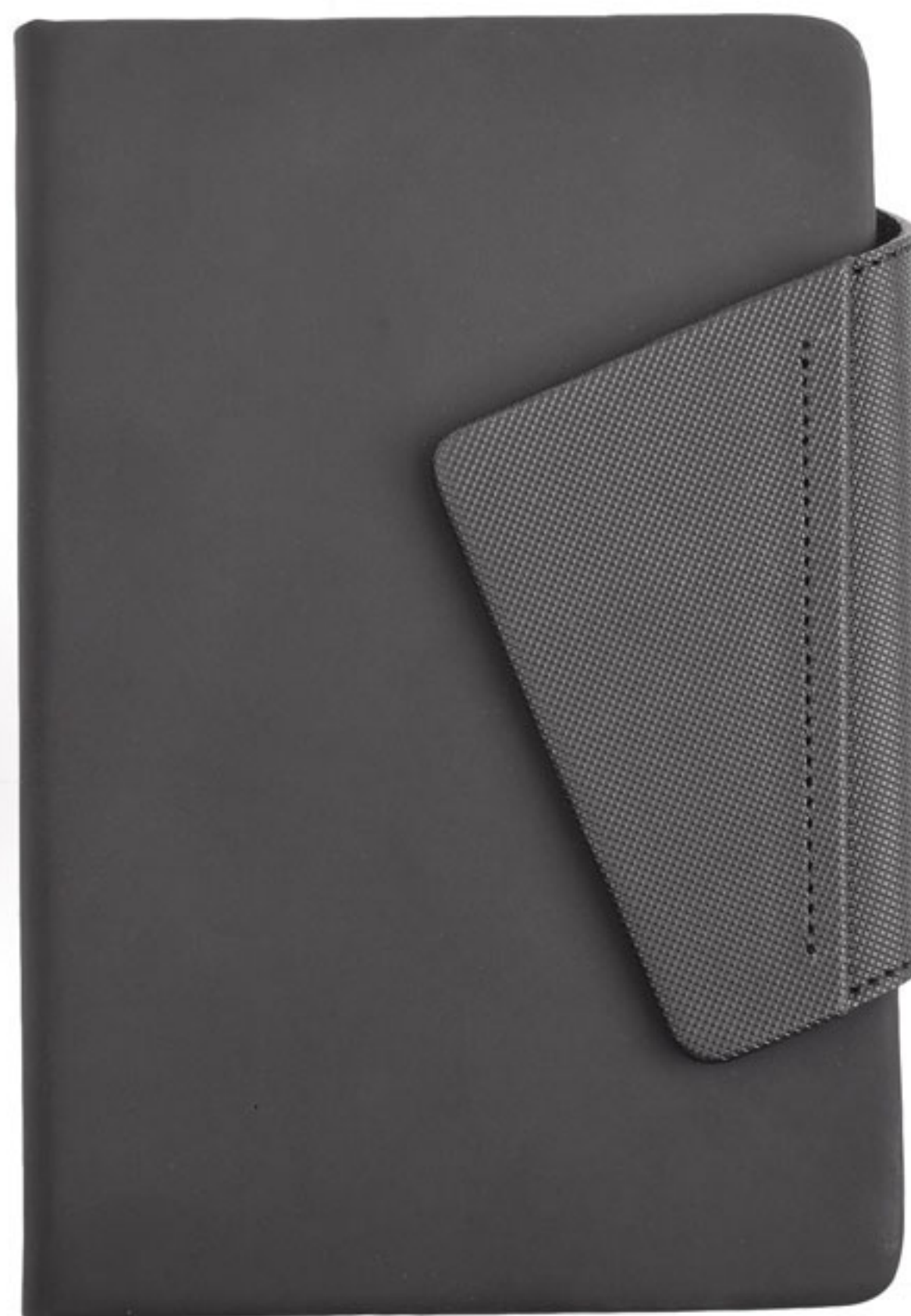
**WIRELESS SPEAKER**

with bluetooth version : v5.0 , battery : 500mAH lithium-polymer , and connection range reaches to 10 m



**WIRELESS CHARGER**

wireless charger with functionality wireless output : 5w



**NOTEBOOK**



**METAL PEN**

**KEY CHAIN**



**Dimensions**  
32 cm / 27cm / 5 cm

TWO TEXTURES  
METAL PALLETTE

**PREMIUM LEATHER BOX**

new medium leather box with the mixture of textured leather and rubber closing by a magnetic metal palette that adds an elegant unique design



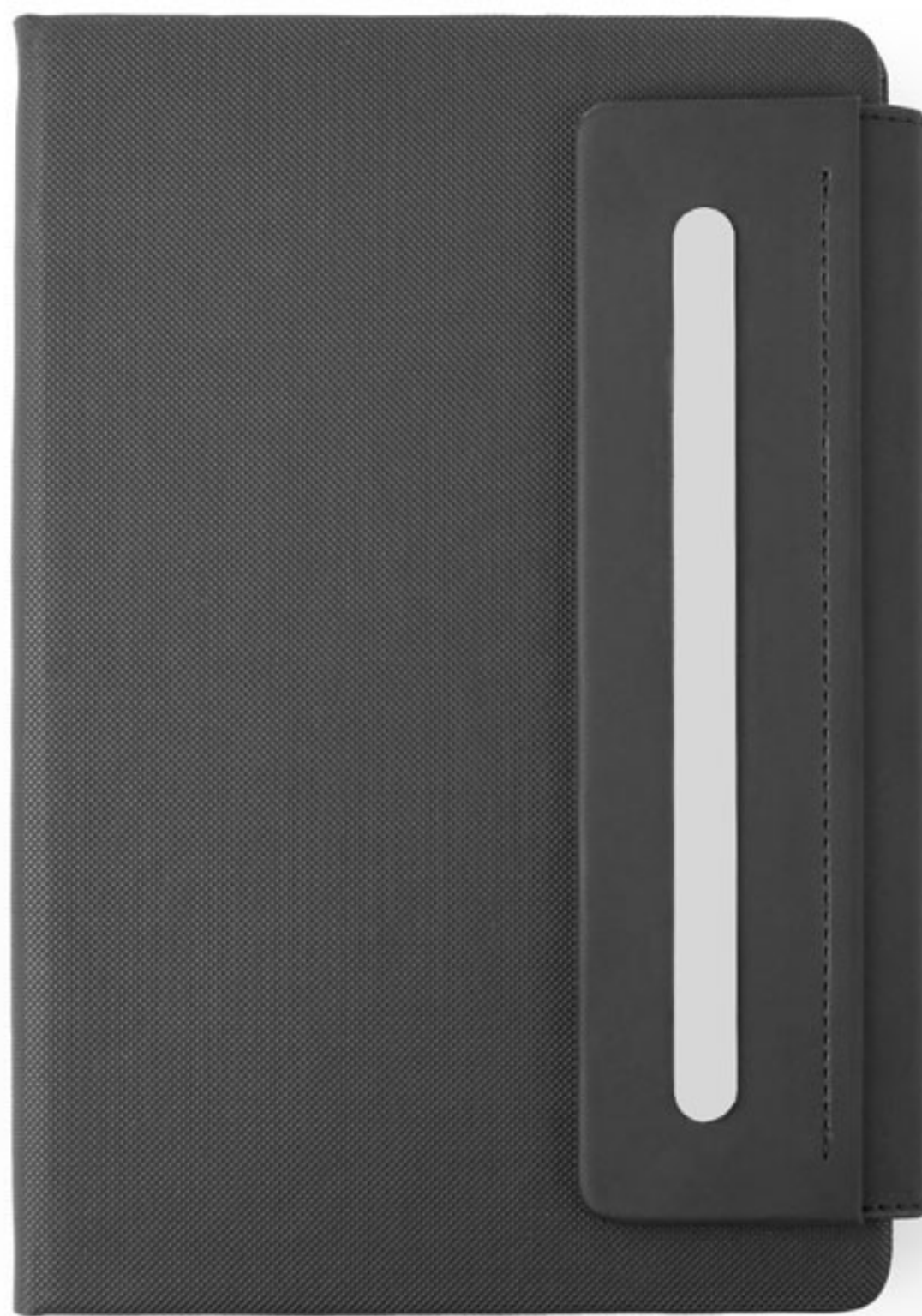


**DIGITAL POWER BANK**

Mini-sized power bank designed with a led screen  
battery capacity : 10000 mAH Type c in/output :  
PD 20W(Max)9v 2.25A 5/2A.



**POWER BANK  
10000 MAH**



**A5 NOTEBOOK**



**METAL PEN**



**CAR CHARGER**

**PREMIUM LEATHER BOX**



**Dimensions**  
32 cm / 27cm / 5 cm

**CRYSTAL FLASH MEMORY**

Elegant flash memory with the mixture of crystal  
and metal textures with high transaction capacity  
reaches up to 30mg/sec



**WIRELESS MOUSE**

with bluteooth version : v5.0 , and connection range r  
eaches to 10 m





**SMART PREMIUM SET**  
**PS17**



**SMART ORGANIZER**  
**5000 MAH**

abilities : 5000 mAh capacity and mirror pallette . places for mobile holder and mobile stand and card pockets and dual usb ports.

**FLASH PEN**  
**32 GB**

**WIRELESS SPEAKER**  
with bluteooth version : v5.0 , battery : 500mAH  
lithium-polymer , and connection  
range reaches to 10 m

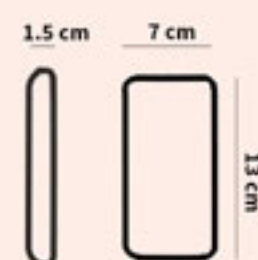


**Dimensions**  
32 cm / 27cm / 5 cm

**TWO TEXTURES**  
**METAL PALLETE**

**DIGITAL WIRELESS POWER BANK**

power bank designed with a led screenbattery capacity : 10000 mAh  
Type c in/output : PD 20W(Max)9v 2.25A 5/2A.



Power Button

USB - type c

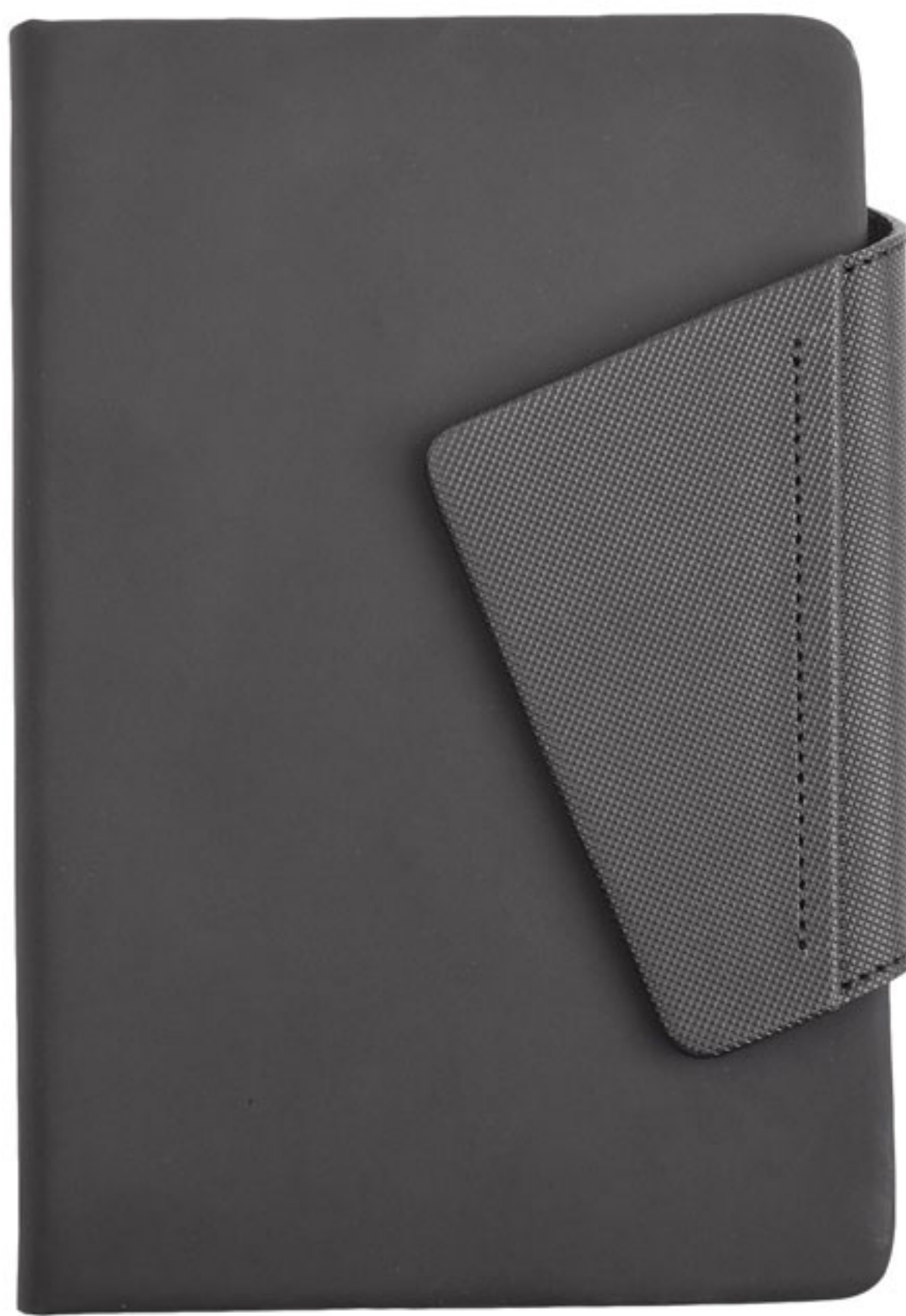




**PREMIER SET**  
**PS15**

**SECURED CARD HOLDER**

Easy slider of solid aluminum materials protects your cards against electronic pickpocketing and prevents RFID theft



**NOTEBOOK**



**METAL PEN**



**KEY CHAIN**

**MAGNETIC POWER BANK**

wireless magnetic power bank with magnetic range to stick to your mobile battery capacity : 5000 mAh . battery energy : 19Wh3.8v Type c in/output : PD 20W(Max)9v 2.25A



**TWO TEXTURES**  
**METAL PALLETE**

**Dimensions**  
32 cm / 27cm / 5 cm





## ELEGANT LEATHER BOX WITH METAL PALLET

### BM6

medium leather box with a mixture of plain rubber and silver palte that produced with high qulaity.



### BOX MATERIAL

rubber medium box with metal plate produced with attention to every detail that makes it special and elegant

### PRINTING STYLE

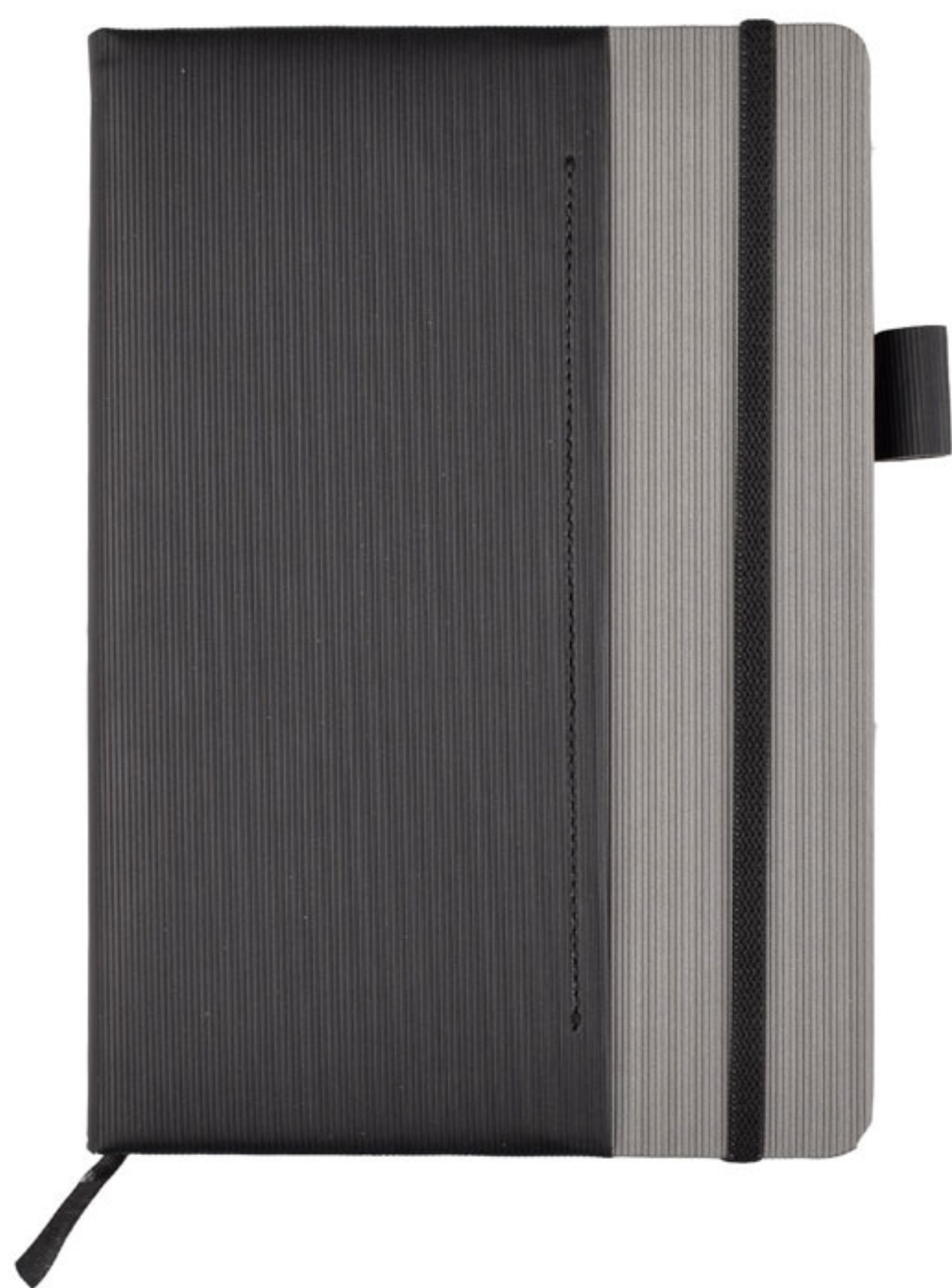
your logo can be engraved or printed



PS14



PREMIER SET



NOTEBOOK



METAL PEN



WIRELESS CHAREGR

SECURED CARD HOLDER



Dimensions  
32 cm / 27cm / 5 cm

PREMIUM LEATHER BOX

new medium leather box with the mixture of textured ltextured rubber closing by a silver metal palette that adds an elegant unique design



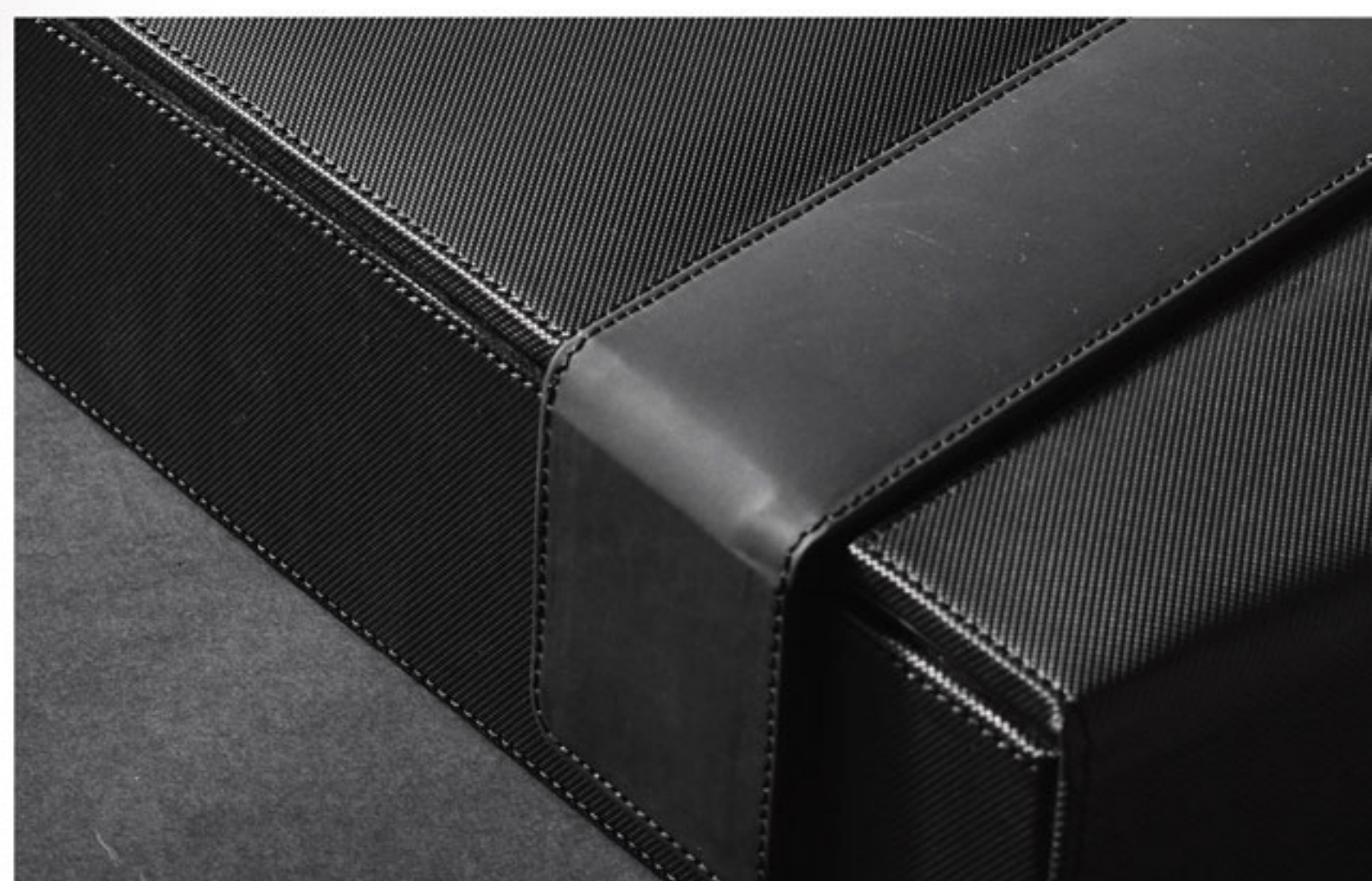


## PREMIUM LEATHER BOX TEXTURE ELEGANT **BM7**

Medium premium leather box With the special design to suit for more items. it is the best solution for your campaign to reflect how successful it will be



MAGNETIC LOCK



## DIMENSIONS

37 cm / 28cm / 5 cm

BLB3



SMART ELEGANT PACKAGE

CATALYST



SMART LEATHER ORGANIZER  
FLASH MEMORY 16GB

METAL PEN

WIRELESS SPEAKER

Wireless speaker with Bluetooth version : v5.0, battery : 500mAH lithium-polymer, and connection range reaches to 10 meters



WIRELESS MOUSE

with bluetooth version : v5.0 , and connection range reaches to 10 m



CHARGABLE BATTERY

**WANT TO GET THE FULL CATALOGS?**

**Our team are ready to help you**

**01000864161 - 01013799984**



**CATALYST**